

CB80 Series Parison Actuators for Blow Molding Machines



DESCRIPTION

The Moog CB80 series Parison Actuator is a custom designed, equal area actuator for the control of die gap position on blow molding machines. Die gap position controls the Parison profile to achieve optimal material distribution during the molding process. The CB80 actuator includes an integral DCDT for stroke position feedback and valve mounting interface to accept the Moog G631 series servovalve or direct drive D633 via an adapter manifold.

This Parison actuator has proven reliable performance on blow molding machines built by world leading manufacturers since 1995.

FEATURES

- 210 bar (3000 psi) pressure rating
- Anti-rotation piston-rod assembly
- Integral pre-blow pneumatic connection
- Heavy duty cast body construction
- Long life, low friction seals
- Proven reliable performance since 1995

SPECIFICATIONS

Dimensions: Area = 40 cm² (6.2 in²)

Stroke = 20 mm (0.787 in)

Maximum operating pressure: 210 bar (3000 psi)

Temperature range: 0-80 deg C (32-175 deg F)

Fluid type: mineral oil, ISO VG 10-100

Filtration: Beta₁₅ > 75, ISO 15/12 or better for servovalve life and reliability

Transducer specifications:

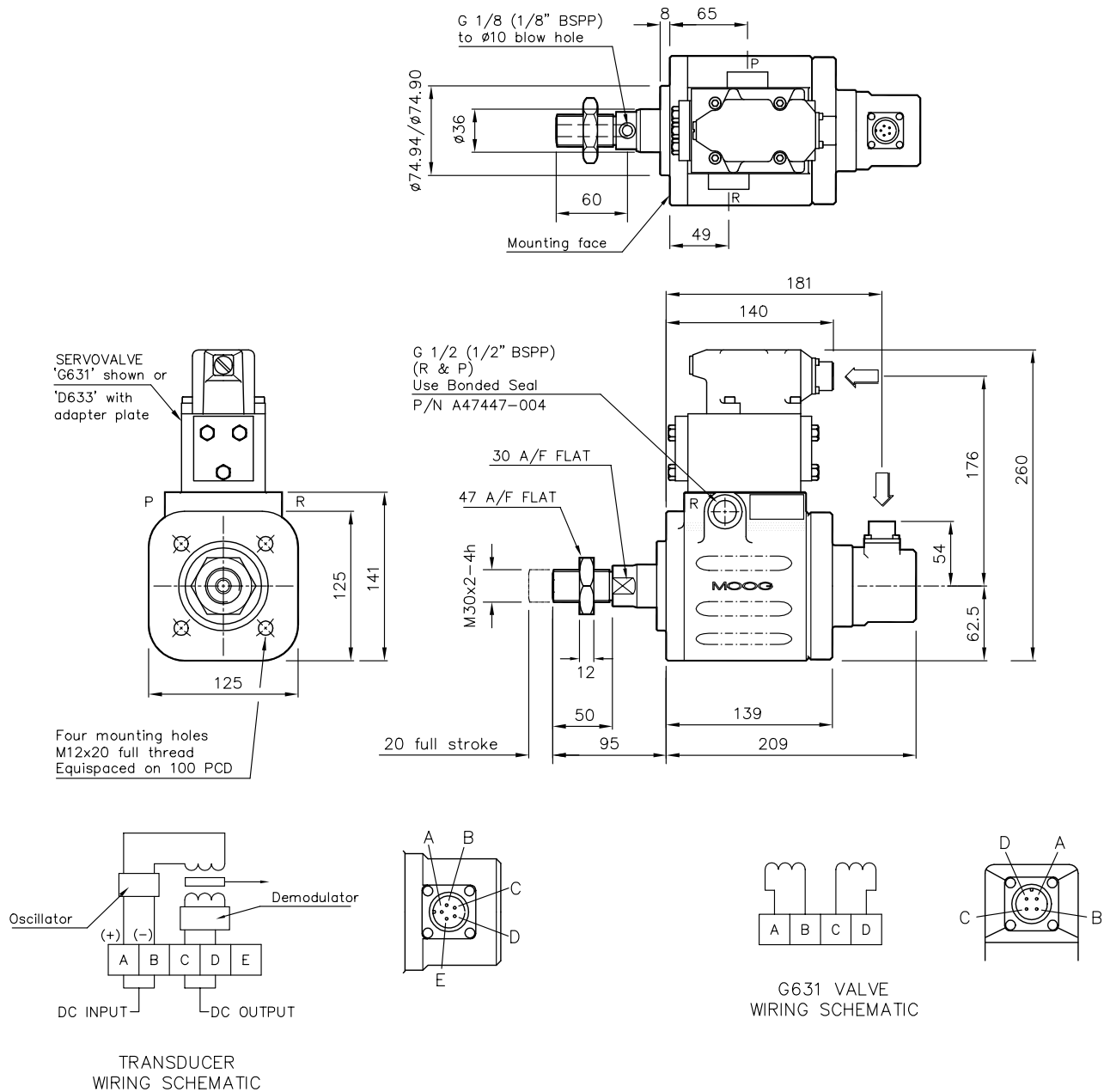
Input 6-30 V DC

Current 8.3-52 mA (over input voltage range)

Output 44mV/mm/V input (1.12V/inch/V input)

Servovalve manifold: NG10, CETOP 5 (Moog G631 series compatible)

INSTALLATION



ORDERING INFORMATION

Parison Actuator CB80 part number B63952

Transducer connector P/N 49054F-14S-5S

G631 connector P/N 49054F-14S-2S

Seal kit for CB80 P/N B96165

Spare transducer P/N A31121-016